



Lions Clubs International  
**FOUNDATION**

# Building for the Future

Annual Report  
2019-2020

## Table of Contents

A Message from the Chairperson | 2

Our Global Causes | 4

2019-2020 Investment and Impact | 16

Partnerships, Affiliations, and Technical Partners | 20

New Initiatives | 22

Responding to COVID-19 | 24

Campaign 100: LCIF Empowering Service | 30

Our Supporters | 35

Board of Trustees | 40

Financial Information | 42

## Our Mission

The mission of Lions Clubs International Foundation is to **support** the efforts of Lions clubs and partners in **servicing** communities locally and globally, **giving hope** and **impacting lives** through humanitarian service projects and grants.

## A Message from the Chairperson



At the outset of my term as chairperson of Lions Clubs International Foundation (LCIF), I imagined the day I would write this message, reflecting on global progress made possible by LCIF during the year.

What I never imagined is **how incredibly full my heart would be today**, as I finally pen this letter.

In a year like none before, I was so very humbled as LCIF empowered the humanitarian spirit, creativity, and tenacity of Lions and partners worldwide. Prior to a global pandemic limiting travel, I visited Lions across the world and saw the good work they do in their communities. I witnessed happy children at Zambia's Ndola Lions School for the Visually Impaired singing and dancing as we celebrated the school's new classrooms and dormitories. The moment touched my heart, and I will never forget it. Another experience that will stay with me forever occurred in Australia, where I witnessed Lions' courage and strength after the devastating bushfires. Though they themselves had suffered, Lions were selfless in their service. I marveled at these projects and so many others, in person and from afar, as Lions shared their stories of life-changing work made possible by LCIF.

I also had the pleasure of joining Lions at their fundraising events for LCIF. Japan, Poland, Mexico, Italy, Thailand, and Greenland are just a few places I visited where Lions showed fierce dedication to LCIF and embraced the notion of service equating to both doing *and* giving.

Then came the last half of the fiscal year, unprecedented as COVID-19 caused unparalleled fear, hardship, and change. Suddenly, it was difficult for Lions, community pillars of strength and comfort, to serve as usual. But, where there is a need, there is a Lion...and there is LCIF.

With more than US\$5.1 million in LCIF funding for pandemic relief, Lions heroically navigated unimaginable challenges. In Canada, they provided meals to weary doctors and nurses staying at the hospital to contain the virus. Roughly 11,000 kilometers away, Bangladesh Lions also provided food, this time to families no longer able to afford nourishment due to lack of work. Serving their communities, Lions in Indonesia increased access to handwashing in public places, while those in France found ways to connect patients in medical isolation with loved ones.

“The **innovation, tenacity, and creativity** have **inspired me beyond measure**. Never in my life have I been **more proud to be a Lion** and **more grateful to LCIF**.”



Adjusting rapidly as social distancing took hold and with an eye to the future, Lions and Leos began harnessing the power of technology to continue supporting LCIF and serve safely. New Jersey, USA-based Leos held a virtual fundraising concert. Lions leaders joined with LCIF staff to provide free webinars to Lions, discussing the future of service and the possibilities ahead.

The innovation, tenacity, and creativity have inspired me beyond measure. Never in my life have I been more proud to be a Lion and more grateful to LCIF.

As we navigate today's new normal, I recognize and applaud Lions and our partner organizations making progress in LCIF's cause areas. It may mean restarting projects. It may take thinking of new ways to accomplish others. What we know for sure, however, is that LCIF is there for those serving a world in need more than ever.

Together with LCIF, together *because* of LCIF, we continue our endeavors.

To Lions, partners, and friends of LCIF who showed such tremendous support this year, thank you for ensuring LCIF can continue empowering those serving to improve health and well-being, strengthen communities, and protect the vulnerable. And to all, I thank you for the honor and privilege of continuing my journey as LCIF chairperson.

In friendship,

**Gudrun Yngvadottir**

2019-2020 Chairperson

Lions Clubs International Foundation

# Our Global Causes



## Disaster Relief

Over the past 50 years, innocent people have been robbed of their homes, jobs, lives. This is a result of a 390 percent increase in natural disasters globally.<sup>1</sup> For many, it's impossible to imagine being victimized by natural disaster or needing to prepare for devastation that could strike in the future. For LCIF, which has mobilized more than US\$140 million for Lions-led disaster preparedness and relief efforts worldwide, the reality is clear, and our commitment continues.



## Vision

More than two billion people live with visual impairment<sup>2</sup>. With an eye to the future, LCIF is building on its history of more than US\$365 million in LCIF SightFirst grants, which have helped Lions show the world a brighter tomorrow. Our commitment continues, adding to this progress:

- More than 488 million people impacted
- 9.3 million cataract surgeries performed
- 2.3 million professional eye care and community health workers trained
- 493 million doses of medicine provided for trachoma and onchocerciasis



## Humanitarian Efforts

Though many are spared challenges of living life limited by disease; disability; or vulnerability due to age, gender, or economic or familial status, many are not. Since 1968, LCIF has funded Lions global humanitarian service as they deepen their commitment to those most vulnerable and to their communities. Our commitment continues.



## Diabetes

A staggering one in 11 adults globally has diabetes<sup>3</sup>; 50 percent of people with type 2 diabetes are unaware they have the disease<sup>4</sup>. With personal and familial health and well-being, community development, and economic prosperity at stake, LCIF has for decades helped Lions improve diabetes awareness, prevention, and management initiatives. Through a focused Diabetes grant program launched in 2018, our commitment continues.



## Youth

Childhood should be carefree, yet many youth face daunting challenges. Supported by LCIF, Lions are ensuring children worldwide receive the education and healthcare they need. World-renowned Harvard University found students participating in Lions Quest – LCIF's signature youth development program rooted in social and emotional learning – reported improved perceptions of school climate, and physical and emotional safety<sup>5</sup>. For more than 35 years, LCIF has funded Lions Quest. For more than 50 years, LCIF has supported projects expanding access to education, healthcare, and inclusive social opportunities. Our commitment continues.



## Childhood Cancer

Your child has cancer...four gut-wrenching words heard annually by parents of 300,000 children<sup>6</sup>. Lives changed forever in the span of a sentence. No child deserves cancer. Yet lymphomas, leukemias, and other forms of the disease common in children are the stark reality for youth worldwide – and for their families. In 2019, LCIF deepened its commitment to those impacted by childhood cancer, launching a focused Childhood Cancer grant program to transform heartache into hope. Our commitment continues.



## Hunger

Despite global production sufficient to feed the entire population, chronic hunger remains a chronic problem. Political and economic instability, rising food and energy prices, and climate change all contribute to this sad truth: Urgent hunger-related challenges are prevalent globally. Deepening its commitment to cultivating a world in which no one goes hungry, LCIF launched a focused Hunger grant program in 2019. Our commitment continues.



## Environment

Environmental impacts know no borders. Globally, climate change is wreaking havoc on entire ecosystems and pervasive pollution continues threatening our health. The challenges are palpable, and Lions want to do something about it. LCIF is there to support Lions' efforts worldwide to protect environmental health, and therefore the well-being of children, families, and communities who call Planet Earth home. Our commitment continues.

Sources/note: <sup>1</sup>International Disaster Database [www.emdat.be](http://www.emdat.be); <sup>2</sup>World Health Organization [who.int/health-topics/blindness-and-vision-loss#tab=tab\\_1](http://who.int/health-topics/blindness-and-vision-loss#tab=tab_1); <sup>3,4</sup>International Diabetes Federation [www.idf.org/e-library/epidemiology-research/diabetes-atlas/134-idf-diabetes-atlas-8th-edition.html](http://www.idf.org/e-library/epidemiology-research/diabetes-atlas/134-idf-diabetes-atlas-8th-edition.html); <sup>5</sup>Jones, S., Kahn, J., Nelson, B., and Temko, S. (2019). "Year 2 Report: A Quasi-Experimental Evaluation of Lions Quest Skills for Adolescence in Two Middle Schools." Cambridge, MA: Harvard University Graduate School of Education [lions-quest.org/wp-content/uploads/2019/03/execsum-sfa-2019-jan.pdf](http://lions-quest.org/wp-content/uploads/2019/03/execsum-sfa-2019-jan.pdf); <sup>6</sup>World Health Organization [who.int/cancer/childhood-cancer/en](http://who.int/cancer/childhood-cancer/en); numbers/impact as of June 30, 2020



**LCIF is deeply engaged in disaster relief efforts, helping Lions prepare for natural disasters;**

respond when and where they strike; and continue relief efforts long after those from other disaster relief organizations have departed.



**Rebuilding the Future in Southeast Africa**

Pummeling Southeast Africa's coast, Cyclone Idai delivered a devastating blow in 2019, Mozambique, Zimbabwe, and Malawi all suffering the storm's wrath and sustaining unprecedented damage and devastation. Nearly 1,100 people perished; hundreds of thousands more were left homeless.

Idai caused a humanitarian crisis unlike any before in the region. With more than three million people in desperate need, LCIF responded swiftly, sending 200 tents providing much needed shelter and 700 water purifiers, vital to stemming the cholera outbreak that had begun.

But there was more to be done.

With a focus on restoring children's education and everyday lives, Lions used US\$70,000 in LCIF Disaster grants to help rebuild three schools as well as damaged classrooms in so many more. Though destruction and debris made reaching worksites in the three countries treacherous, Lions persevered. Steadily, once-obliterated schools rose from the ground. Steadily, classrooms rendered uninhabitable became safe once again.

**Together, LCIF and Lions had helped transform devastating reminders of the area's worst natural disaster into beacons of hope for more promising futures.**



**LCIF is deeply committed to supporting Lions' sight-saving efforts**

through programs including SightFirst, now in its 30th year, which help Lions build comprehensive eye care systems in underserved communities and care for those who are blind or visually impaired.



**Delivering a Brighter Future to Paraguay**

Not long ago, eye care was inaccessible, and often unaffordable, to many in Paraguay's rural Itapúa community. In 2018, local Lions began changing that, helping to fund and bring to fruition, Lions Club of Coronel Bogado Ophthalmology Clinic (LCCBOC).

Since opening its doors, LCCBOC provided low-cost basic eye screenings and care to residents of the area's poorest communities with an ophthalmologist travelling to the clinic periodically with his own equipment. However, these services were sporadic and patients needing further evaluation were referred to a more comprehensive clinic in Asunción, a daunting five hours away. LCCBOC could provide only basic eye examinations, meaning patients suffering with pain or vision loss due to issues such as diabetic retinopathy, glaucoma, or macular degeneration, were still left without answers.

With US\$62,729 in LCIF grant funding, Lions seized the opportunity to equip LCCBOC, making more extensive, permanent care accessible close to home.

Today, the clinic has installed modern equipment for diagnosing refractive errors, cataract, diabetic retinopathy, glaucoma, macular degeneration, and pediatric eye

**“ We've made access to comprehensive eye care more convenient and more affordable. Lions and LCIF have given our neighbors a precious gift.”**

Daniel Domínguez, grant administrator  
Lions Clubs International

diseases. The new machines and technology are helping LCCBOC increase patient capacity 30 percent annually over 60 months, to more than 3,400 consultations a year. Service is delivered by a full-time ophthalmologist, provided to the clinic by the Ministry of Health and Paraguay's national vision committee, and whose salary is paid by the government.

In addition to developing and delivering an eye health education program for LCCBOC, Lions help keep costs low and fund the cost of care for those unable to pay. Patients needing treatment beyond LCCBOC's capability are referred to the clinic in Asunción, with Lions funding transportation and care for those who cannot afford the cost. Affiliated hospitals provide accommodations and meals for the patients.



**Through grant funding of humanitarian efforts,**

LCIF supports programs addressing the needs of at-risk, vulnerable populations and communities worldwide.



**Guiding More Productive Lives**

“Man’s best friend.” The common phrase describes loving and lovable dogs, who fill so many lives with companionship and sheer joy. For 20 residents of Argentina, these best friends do so much more. For these residents, dogs guide the way to more productive and fulfilling lives.

An estimated 650,000 Argentinians live with blindness, yet until recently a scarce 22 had the invaluable assistance of a guide dog, the majority of which were trained in other countries. With the U.S. provider of these highly skilled, life-changing “friends” no longer exporting service dogs, Lions in Argentina developed a plan that, with support from a US\$100,000 LCIF Matching grant, helped the blossoming Argentinian Guide Dog School build a permanent home and increase the number of dogs trained for service.

When the school’s operations initially began, administrative offices were housed in La Colonia Quilmes Oeste Lions Club clubhouse, breeding occurred on a Lion’s farm, and a local amusement park modeled like a town served as the dogs’ training grounds. With LCIF grant funds, contributions and sweat equity from local Lions, and land donated by the Quilmes, Argentina, government, the permanent facility came to fruition.

Today, all Argentinian Guide Dog School functions – breeding, training, administration – take place efficiently under one roof. The facility also includes an operating room and has sent trained dogs to Chile, Ecuador, and Spain to help visually impaired residents there enjoy more independent lives as well.



**LCIF has long supported Lions’ efforts to fight diabetes, funding large-scale projects**

that expand diabetes prevention, education, and treatment access to underserved populations. The Foundation’s SightFirst grant program also supports Lions’ diabetic retinopathy healthcare initiatives.

“ The magnitude of the problem is immense. LCIF enabled us to help improve quality of life by preventing complications of the disease and helping prevent onset of type 2 diabetes.”

Rajesh Kolarikkal, past district governor  
Lions Clubs International

**Empowering Massive, Healthy Change**

Diabetes has taken a severe toll on residents of Kerala State, considered the “diabetes capital” of India, Kolarikkal’s home country. With rates of the disease rising, and as many as 57 percent of cases going undiagnosed, Lions in 100 clubs began a three-year effort to create massive change in Kerala. They did so with help from a US\$71,610 LCIF Diabetes grant.

In collaboration with Amrita Institute of Medical Sciences and Research Centre (AIMS), one of India’s largest medical facilities, 150 Lions and accredited social health activists (ASHA) from the country’s Ministry of Health & Family Welfare are learning to measure blood sugar levels and perform diabetes screenings. Grant funds are also helping ASHA workers become adept at using cameras designed to detect diabetes-related eye issues, such as diabetic retinopathy.



Those identified as having undiagnosed diabetes or at high risk of developing the disease are referred to Lions’ diabetes events, where a 40-member medical team from AIMS provides potentially life-saving counseling and care.

LCIF funding is also helping educate Lions on diabetes complications, basic foot care, and healthy lifestyle changes. Lions then share this knowledge with community members as they distribute materials during diabetes education and screening events they organize.

In the project’s first six months, 145 ASHA workers were trained, and 72,500 Kerala residents were screened during 33 events. Of those referred for diabetes-related care, 92 percent attended follow-up appointments, boding well for the health of Kerala.



**LCIF serves youth through improved access to quality education,** vital health services, inclusive social and recreational opportunities, and positive youth development programs.



### Lions Quest: Delivering Social and Emotional Learning to the Classroom

Since 1985, Lions Quest, LCIF’s world-renowned social and emotional learning (SEL) curriculum, has helped more than 19 million students feel safer and gain important social and problem-solving skills. The program has also helped educators become more skilled at addressing school challenges such as student fighting, bullying, and absenteeism, while becoming more effective at developing calmer, more thoughtful, healthier students.

Lions Quest’s age-targeted curricula and activities are designed to equip students from Pre-K through Grade 12 with skills and tactics to say no to drugs, tobacco, and alcohol; make responsible decisions; avoid and address bullying; and establish positive relationships. Character development lessons help students become adept at feeling and showing empathy, setting and achieving goals, and managing emotions. The value of helping others through service learning is yet another aspect of the program.

#### Lessons for All Ages

- **Skills for Growing – Pre-K-Grade 5:** Directs students’ energies into becoming capable, healthy young people with a sense of direction and strong commitment to family, school, community
- **Skills for Adolescence – Grades 6-8:** Helps students, parents, teachers address physical, emotional, social challenges of early adolescence
- **Skills for Action – Grades 9-12:** Capitalizes on belief that young people with strong character and who expect positive behavior can meaningfully address issues affecting their lives, their community, the world

#### Lions Quest by the Numbers

- Students served: **19,017,066**
- Educators trained: **761,036**
- Countries/geographic areas in which implemented: **109**

### Building Better School Environments and Communities

With newfound knowledge and life skills, students are better equipped to do great things in their communities and lives.

In Merrick, New York, USA, students and teachers feel the positive effects of Lions Quest, LCIF’s social and emotional learning curriculum. Launched district-wide, Lions Quest is helping students develop confidence, self-esteem, and teamwork skills, while fostering a sense of community, through ongoing fun, team-oriented lessons and discussions.

Second-graders at Chatterton School enjoyed a lesson that required them to work together toward a common goal and then discussed what worked and what did not. “This is the kind of teamwork we expect from our students and value as a school community,” said Chatterton School Principal Dana Bermas.

“Lions Quest reinforces the school philosophy of kindness and respect for all and gives us a common language among all students.”

Dana Bermas, principal  
Chatterton School

In addition to benefitting students, Lions Quest is also positively affecting the community. Students at Birch School raised close to US\$3,200 for childhood cancer research after participating in the program’s service-learning lessons. Said sixth-grader Ryan, “Lions Quest has helped me be a better person. It taught us to put others first.”



**LCIF is helping Lions strengthen their commitment**

to increasing quality of life for children with cancer and their families.



A cancer diagnosis is among the most devastating for parents to hear. Together, LCIF and Lions are working to provide family support during what may be their darkest hours. Grant funding addresses infrastructure needs including short-term housing, and education and recreation needs, during treatment.

**First Childhood Cancer Pilot Grants Awarded**

In January 2020, LCIF's Board of Trustees awarded the Foundation's first Childhood Cancer grants. Funds support Lions' projects implemented in coordination or collaboration with existing government or charitable childhood cancer medical facilities and range from US\$10,000 to US\$150,000. Ongoing projects include:

- In Utrecht, Netherlands, a US\$150,000 Childhood Cancer grant is helping upgrade 87 patient rooms at Princess Máxima Center for Pediatric Oncology.

An anticipated 4,350 families will benefit annually from the rooms, which enable family members to stay with children undergoing treatment.

- A US\$32,025 Childhood Cancer grant awarded to Lions in Kerala, India, is helping Malabar Cancer Centre establish a children's library, a conference hall for youngsters, and a small theater to enhance quality of life for more than 60 children each year.

**With support from LCIF, Lions and volunteers from partner organization, Anthem Foundation,**

make yarn wigs for children battling cancer. The wigs range from superheroes to princesses to pirates.







**LCIF is empowering Lions to improve food access for all** through investments in infrastructure and transportation systems that increase capacity for food banks, school-based feeding programs, feeding centers, and food distribution facilities.



**Initial Hunger Pilot Grants Approved**

LCIF's first Hunger grants received Board approval in January 2020. Awarded in amounts between US\$10,000 and US\$100,000, Hunger grants help Lions address chronic and episodic food insecurity through infrastructure development and equipment acquisition. Ongoing projects include:

- In Michigan, USA, LCIF awarded Lions a US\$45,000 Hunger grant to expand freezer space at the Hungry for Christ food pantry. The additional capacity will enable the pantry, vital to community health and well-being, to serve 18,000 more people monthly, while increasing food quality and decreasing waste.
- A US\$10,000 LCIF Hunger grant is helping Lions establish a food pantry at Joe DiMaggio Children's Hospital in Florida, USA. Centrally located in the area, the hospital-based pantry is slated to provide relief for 750 families annually.

**Committed to Reducing Food Insecurity**

Hunger is an everyday presence for some, stressful physically and mentally. Food insecurity is also detrimental to those trying to gain financial stability and forge more promising futures for themselves and their communities. It's all intertwined.

In Quebec, Canada's Argenteuil County, many families experience hunger, relying on local Center d'Entraide d'Argenteuil, which provides food and empowering social services for the community.

Vital to the center's ability to serve residents is a refrigerated truck that transports fresh food from providers to the center. When the truck broke down beyond repair, the lifeline many locals relied on was effectively severed, seriously limiting residents' access to nutritious food they get from the center. Understanding the critical impact on children and families, Lions acted swiftly.

With a US\$26,718 LCIF Matching grant, Lions purchased the community center a new truck and modified it with a refrigeration system. Because of LCIF and Lions, the center's 1,500 weekly patrons once again have access to a bounty of fresh, healthy food.



**LCIF supports Lions protecting the environmental health of our communities** to generate long-term, positive ecological impact globally.



**Funding an Urban Oasis for All**

A rapidly growing problem, deforestation robs wildlife of their homes while also wreaking havoc on weather patterns, air quality, climate, and entire ecosystems. As forests are cleared to make way for development or unsafe farming, a dire situation is being created. Air quality is suffering for residents, and land animals, the vast majority of which live in forested land, are becoming extinct.

In urban Busan, Korea, Lions did their part to tackle deforestation and grow a healthier environment. Using a US\$34,103 LCIF District and Club Community Impact grant, they planted 1,000 trees in the Geumjeong Mountain area, where residents were seeking more open space to enjoy fresh air.

To rapidly transform the land into an urban forest oasis, Lions worked the land, dotting it with fast-growing fragrant cypress and colorful camellia trees.



**With each new day, Lions Forest grows more lush, providing a much-needed home to wildlife and visitors with improved air quality, shade, tranquility, and abundant opportunity to enjoy nature.**

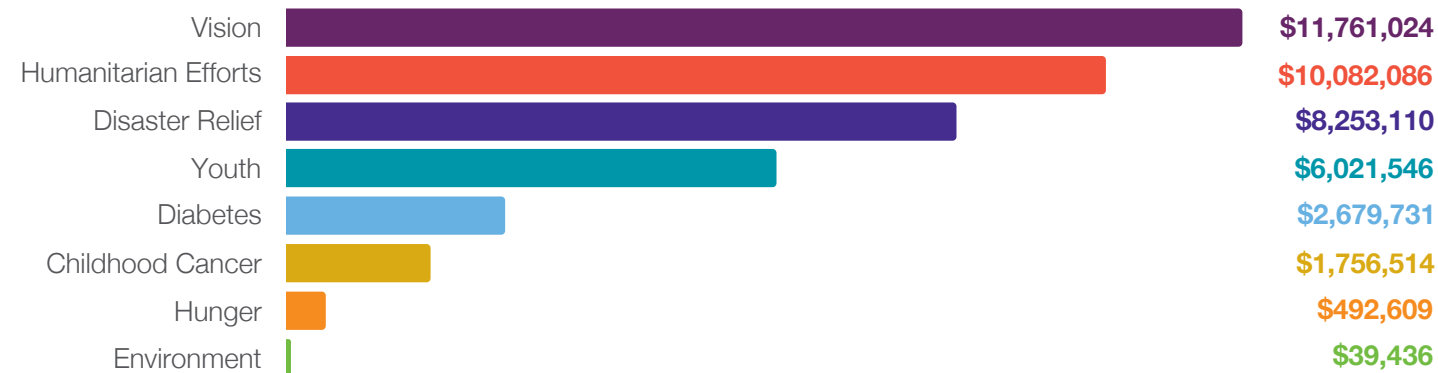
BUILDING FOR THE FUTURE

# 2019-2020 Investment and Impact

## Committed to Our World in Need

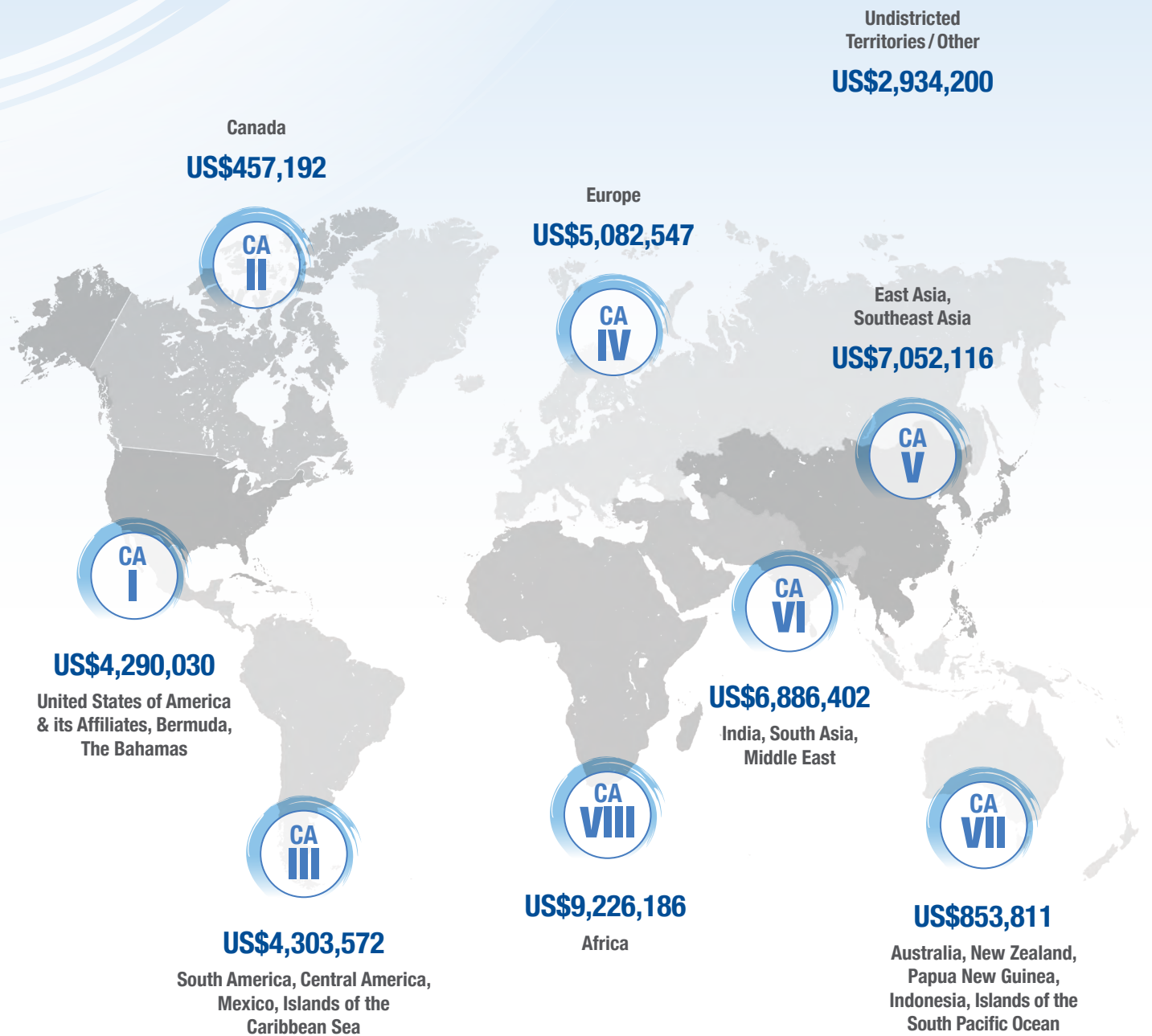
In the 2019-2020 fiscal year, LCIF awarded 1,360 grants totaling more than US\$41 million\*. Grant funding empowered Lions worldwide to better their communities and deeply impact those in need.

### GRANTS AWARDED BY CAUSE AREA (US\$)\*



\* Representative of all 2019-2020 grants, including those conditionally approved.

## Grants Awarded by Lions Constitutional Area (CA)\*



\* Representative of all 2019-2020 grants, including those conditionally approved.



**Lions Clubs International  
FOUNDATION**

## Grant Types

### Childhood Cancer Pilot Grants

Childhood Cancer Pilot grants deepen Lions' ability to help children with cancer, and their families, through projects such as building or expanding family-friendly waiting rooms and housing; improving access to transportation for medical appointments; and fulfilling education and recreation needs.

### Diabetes Grants

Diabetes grants support Lions' work to reduce diabetes' prevalence and improve quality of life for those diagnosed by enhancing diabetes camps, implementing screening events, increasing access to care, and training healthcare professionals.

### Disaster Grants

Disaster grants enable Lions to provide immediate and ongoing support to victims of natural disasters. Offered are Disaster Preparedness, Emergency, Community Recovery, and Major Catastrophe grants.

### District and Club Community Impact Grants

District and Club Community Impact grants transform as much as 15 percent of unrestricted club and district contributions to LCIF into grants to fund local projects.

### Hunger Pilot Grants

Hunger Pilot grants help Lions support school-based feeding programs, food banks, feeding centers, and similar facilities through large-scale infrastructure development focused on equipment acquisition and transport.

### Leo Service Grants

Leo Service grants support Lions Clubs International's youngest members' efforts to plan larger humanitarian initiatives designed to make significant impact.

### Lions Quest Grants

Lions Quest grants enable schools to establish and expand social and emotional learning opportunities delivered through the Lions Quest curriculum. Offered are Community Partnership, Lions Quest Program, and Lions Quest Promotional grants.

### Matching Grants

Matching grants fund larger scale humanitarian projects that help communities gain access to education, technology, healthcare, and other life-changing improvements where there is a need for major equipment or construction.

### SightFirst Grants

SightFirst grants help fight avoidable blindness, provide care for those who are blind or visually impaired, and develop infrastructure for comprehensive eye care systems.



## An Emergency of Global Proportions

**In 2020, our world in need entered a crisis.** To help Lions address epic challenges wrought by COVID-19, and augmenting its portfolio of grant programs, LCIF quickly invoked special Disaster grant funding beginning in late January. As the virus spread worldwide, so too did LCIF's support.

**By June 30, LCIF had provided more than US\$5.1 million in grant funds for global pandemic relief. This story from Japan is just one made possible by hundreds of LCIF frontline relief grants.**

### Protecting the Vulnerable in Japan

No country is immune to the global pandemic, the novel coronavirus proving itself an eager world traveler. While COVID-19 has not discriminated against any particular part of the world, it has seemingly put certain populations at greater risk, such as those who are vulnerable because of age, socioeconomic status, or underlying health issues.

When COVID-19 made its way to Japan, a wave of fear and uncertainty washed over the country. Lions there immediately volunteered to help protect the most

vulnerable of their neighbors, figuring a way to serve while remaining safe themselves. In April, with a US\$100,000 grant from LCIF, Lions sourced and secured 200,000 protective facemasks, subsequently providing them to local authorities.

Through a strategic government-run distribution effort, Lions were ensured the masks reached local nursing homes for the elderly, facilities for underprivileged children, and Japan residents who are disabled. *(For more on LCIF's response to COVID-19, turn to page 24.)*

# Partnerships, Affiliations, and Technical Partners

LCIF's partnerships, affiliations, and technical partners provide opportunities to share critical knowledge, inspiration, and financial support and resources to advance large and promising projects, and to accelerate meaningful change globally.

## Our Partners

Organizations that provided LCIF with funding during the year.



## Our Affiliates

Executing partners that utilized funds provided by LCIF during the year.



## Our Technical Partners

Organizations with which LCIF convened during the year to ensure sustainable, impactful projects.



## Paving the Path to the Bell of Bravery



**In sub-Saharan Africa, as few as 10 percent of children who develop cancer will survive.** In developed countries, the average is 80 percent.

This discrepancy is gut-wrenching.

In 2017, Texas Children's Hospital launched a major effort in Africa to tackle childhood cancer, which steals 90,000 young lives annually. The program, Global HOPE (Hematology-Oncology Pediatric Excellence), was strengthened in 2019 with formation of an innovative partnership with LCIF, which pledged US\$2 million over two years to help build long-term capacity and technical capabilities to treat and dramatically improve prognoses for children with cancer in sub-Saharan Africa. In Botswana, Malawi, and Uganda, Global HOPE and LCIF are together taking a unique and multi-faceted approach to saving young cancer patients' lives. Lions are critical to the effort as well, engaging with community members to drive positive outcomes and healthier futures.

Today, the first Global HOPE pediatric hematology-oncology fellowship program in East Africa enables local physicians across the continent to access advanced medical training without having to leave Africa. LCIF is extending critical resource access, funding the development of state-of-the-art clean pharmacies specialized for chemotherapy, vital to patient treatment and staff safety.

For their part, local Lions are raising awareness of childhood cancer in the community and dispelling common myths, such as those painting childhood cancer as untreatable or a disease of the wealthy, and therefore non-existent in sub-Saharan Africa. Lions are also raising funds to ensure patient care and community education continue, and positive outcomes are celebrated.

Ringling the "Bell of Bravery" is a joyous tradition Lions brought to fruition in one Botswana hospital. "The end of treatment can be anticlimactic," said Dr. Jeremy Slone, medical director of the Global HOPE Botswana program. "Lions funded the bell, which gives kids finishing treatment a cathartic ending to their journey and is equally meaningful to medical staff who work tirelessly to support the children and families." The bell symbolizes hope for the children and their journey ahead.

**Global HOPE, LCIF, and Lions. Together, better. Together, stronger in the fight against childhood cancer.**

## New Initiatives

During the 2019-2020 fiscal year, LCIF developed new initiatives and programs to benefit the Foundation, and ultimately Lions and recipients of their service.

Major accomplishments were made.



### Digital Fundraising

LCIF's Facebook page promotes Foundation-supported Lions-led projects, and LCIF events and news. The page also enables Facebook users to create personal fundraisers for LCIF. Each Facebook user can now create a dedicated LCIF fundraiser, customizing the online event with a personal message and photos. Funds raised – US\$78,502 in year one – go directly from Facebook to LCIF.

In addition to launching Facebook fundraisers, in January 2020, LCIF began text-to-donate efforts in select markets. In the United States, donors can now support the Foundation by texting LCIF to 243-725. Text-to-donate capabilities will be expanded to additional markets in the upcoming year.

### Planned Giving Fundraising

An enhanced planned giving program began, broadening the Foundation's fundraising strategy. Leveraging various financial and estate planning options, donors choosing planned giving simultaneously create their philanthropic legacy and more promising futures for communities that will benefit from LCIF-funded Lions service. Significant financial and tax benefits may also be realized by donors taking advantage of planned giving vehicles.

As part of its planned giving focus, LCIF proudly launched the *Lions Legacy Society* for those donors who entrust legacy gifts to LCIF. The Society also provides recognition for legacy donors.

### New Progressive Recognition for Lead and Major Donors

To recognize varying levels of support from Lead and Major donors, LCIF instituted additional levels of recognition within this top-tier gifts program. New donor recognition levels are Progressive Major, Progressive Lead, and Visionary Lead.

### Marketing Through Partnership

Since 2002, LCIF has partnered with Johnson & Johnson Vision (J&JV) to develop the largest known school-based eye health program, Sight For Kids. Throughout this partnership, programs have been developed to promote collaboration internally to Johnson & Johnson Vision employees, and to highlight community impact to consumers worldwide. During fiscal year 2019-2020, the partnership successfully implemented marketing efforts such as employee giving, point-of-sale campaigns, and consumer-product-based cause marketing, promoting collaboration globally and supporting Sight For Kids.

### Lions Quest Evolves During COVID-19

Social and emotional learning (SEL) is important now more than ever. With COVID-19 disrupting students' lives and causing unparalleled trauma, Lions Quest created a series of online resources to ensure students can continue SEL and effectively cope with the pandemic. The online resources are built on Lions Quest-proven SEL approaches and have been augmented by the practice of mindfulness.

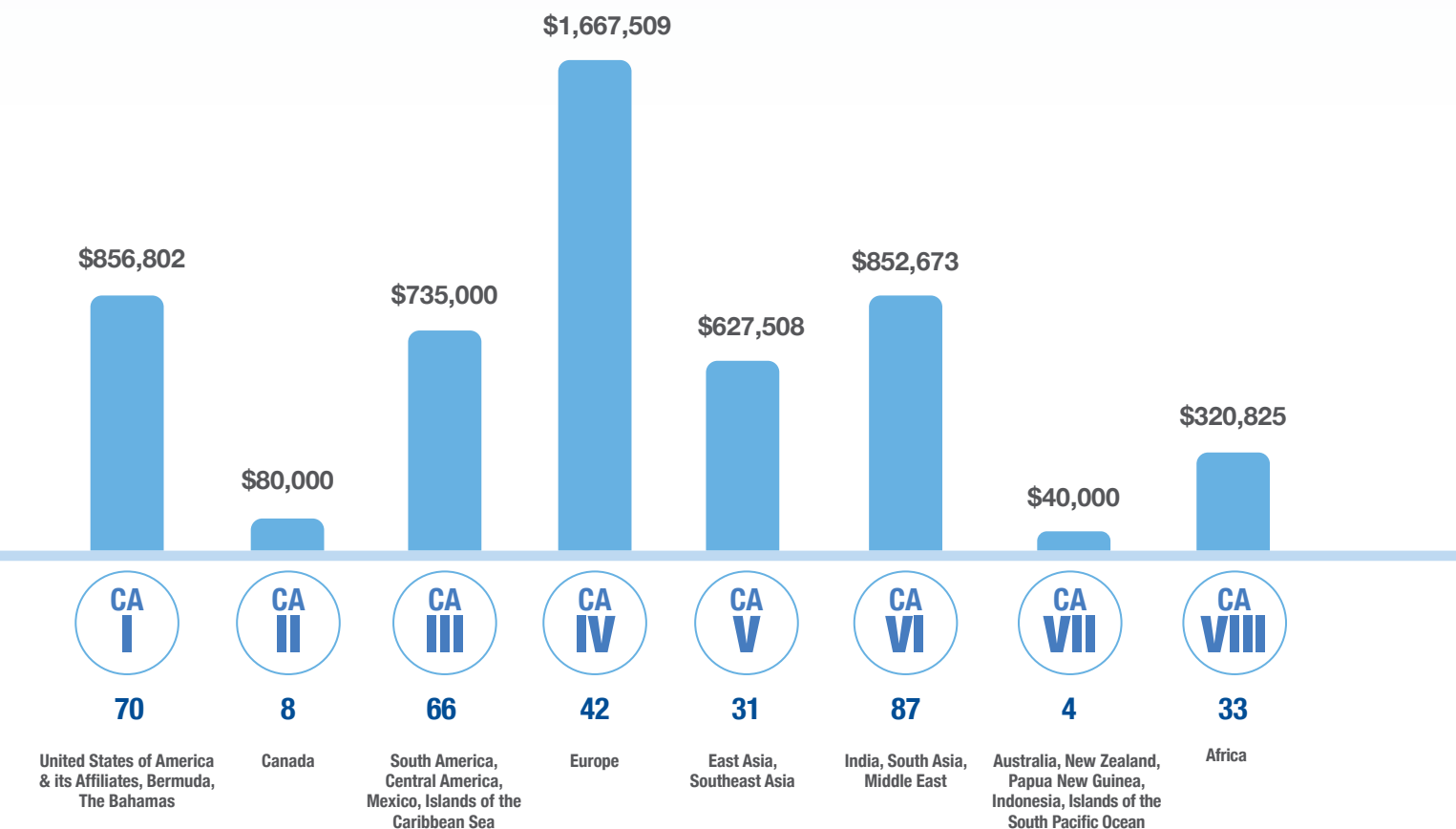
### District and Club Community Impact Grants

Throughout the year, LCIF awarded 551 District and Club Community Impact grants totaling US\$2,218,166. Projects spanned all eight of LCIF's cause areas, supporting Lions' communities all across the world in every Lions constitutional area, and highlighting the value of a donation to LCIF.

# Responding to COVID-19

Our decade began like no other, with healthcare systems stressed, economies halted, and more than a billion people worldwide staying home, staying safe. Answering the urgent call was LCIF, funding Lions' efforts to serve their communities while also staying safe. Through special COVID-19 grants, as well as its District and Club Community Impact grants, LCIF empowered Lions globally to deliver protection and relief during some of the world's darkest hours.

## COVID-19 Frontline Relief Grants (US\$) by Lions Constitutional Area (CA)



At June 30, LCIF had awarded **US\$5,180,317** through 341 grants for COVID-19 relief.



LCIF District and Club Community Impact Grant **US\$13,000** Valdilana, Italy



1 SmartVest®

## Breathing Easier in Italy

When COVID-19 first began its global spread, Italy was hit particularly hard. In March, seemingly overnight, it gained the dubious distinction of having the world's second highest rate of cases and deaths.

Overwhelmed with patients, hospitals rapidly depleted precious resources, including space; medical workers were stretched beyond their limits. Lions in Italy immediately began planning how to help. They determined they would fight a respiratory virus by protecting residents of Casa di Gabri, a residential home for children whose respiratory conditions and compromised immune systems require highly specialized, 24-hour care.

With a US\$13,000 LCIF District and Club Community Impact grant, Lions purchased a SmartVest, which helps clear lungs and airways, making breathing easier and less painful. With the vest donated to Casa di Gabri, the home was better prepared for a potential virus outbreak, easing the minds of those caring for its residents.



LCIF Emergency Grant  
**US\$10,000**  
Mumbai,  
India

**6**  
Hospitals Supplied

**6,500**  
PPE Kits

**6,500**  
N95 Masks

**1,500**  
Bottles of Sanitizer

**3,000**  
Three-ply Masks

### Helping Lions in India Deliver Essential Supplies

The situation was dire. As COVID-19 spread from India's cities to rural areas, where medical care is already difficult to access, hospitals were reaching capacity.

Adding to the challenges, personal protective equipment (PPE) was in dangerously short supply, forcing medical workers to reuse already well-worn masks – the only barrier between themselves and the deadly virus. They were the lucky ones... Some medical staff had no PPE at all.



– with 6,500 PPE kits, an equal number of N95 masks, 1,500 bottles of sanitizer, and 3,000 three-ply masks.

Lions were also instrumental in arranging logistics to safely deliver medical equipment and additional supplies to emergency management systems, medical clinics, and other hospitals.

Through 66 LCIF grants totaling US\$660,000, Lions throughout India provided frontline medical professionals with PPE, greatly increasing safety for them, their families, and patients. In Mumbai, Lions Club of Sion used a US\$10,000 LCIF Emergency grant to help supply six public hospitals – one for children



### Battling COVID-19 in Brazil

When COVID-19 dealt a deft blow to their country, Lions throughout Brazil engaged with ferocity, determined to help frontline workers stay as safe as possible.

In densely populated São Paulo, local emergency response teams and healthcare facility staff were becoming overwhelmed by rising patient volume and dwindling personal protective equipment (PPE) supplies. Eager to support their local heroes, Lions in São Paulo (District LC-2) pioneered low-cost production of face shields. With a US\$10,000 LCIF grant added to funds collected locally, Lions produced more than 46,000 shields for hospitals, health centers, senior care facilities, and emergency responders. Local schools received 2,000 of the shields to use as they returned to normal activity.

LCIF then awarded 26 more grants totaling US\$315,000 to Lions across Brazil, who used funds to continue mass production of face shields, distributing another 54,000 across the country. In total, Lions in Brazil produced more than 101,000 face shields – far exceeding their goal of 50,000 – as well as provided virus testing supplies; hand sanitizer; and PPE such as gloves, masks, and gowns.

LCIF Emergency Grant  
**US\$10,000**  
São Paulo,  
Brazil

**46,000**  
Face Shields



LCIF Emergency Grant  
**US\$10,000**  
Senegal,  
West Africa

### Protecting Health in Senegal

In lesser developed countries, where healthcare services and resources, and access to them, are often lacking, illness poses heightened risk to residents.

Senegal, in West Africa, is one such country. Whether access challenges stem from physical distance or affordability, end results can be bleak: More people struggle to overcome illness, and familial and community well-being



suffer. In today's COVID-19 environment, it means those most vulnerable are at much higher risk of health complications, even death.

With US\$10,000 in Emergency grant funding from LCIF, and an understanding of the urgent and grave nature of the

situation, Senegal Lions stepped in to protect their neighbors. Lions sourced and purchased 430 pieces of personal protective equipment (PPE), such as masks, gowns, and gloves, subsequently donating supplies to the Ministry of Health and Social Action for distribution.

**In a time of great struggle and uncertainty, LCIF and Lions provided grateful Senegal medical workers peace of mind through desperately needed PPE.**

  
**430**  
Masks

  
**430**  
Gowns

  
**430**  
Gloves



LCIF Emergency Grant  
**US\$10,000**  
Jakarta,  
Indonesia

### Handwashing and Hope in Indonesia

As COVID-19 continued to spread, so did education on methods of protection from the debilitating virus.

A particularly effective and simple practice is thorough handwashing. While scrubbing germs away at home may be relatively easy, what if ready access to soap and water is not available? What happens when life requires venturing into public places and away from sanitation?



To provide community members increased handwashing opportunities, Lions in and near Jakarta, Indonesia, used a US\$10,000 LCIF Emergency grant to build 11 sanitizing stations outside health centers and hospitals throughout the area. Each setup offers a refillable water tank, four sinks, soap

dispensers, and paper towels. With remaining grant funds, Lions purchased and distributed invaluable personal protective equipment (PPE), providing local hospitals 180 boxes of gloves and surgical masks, 300 pairs of boots, 300 face shields, 350 hazmat suits, and nine thermometers. As many as 50,000 community members are estimated to have benefitted from the PPE.

Broadening its support, LCIF provided three additional US\$10,000 grants for COVID-19 relief efforts throughout Indonesia. Said one medical professional, "Thank you Lions Clubs for providing PPEs. They have been in short supply, and now our doctors can change their PPE according to the standard."

  
**11**  
Sanitation Centers

  
  
**180**  
Boxes of Gloves | Surgical Masks

  
  
**300**  
Pairs of Boots | Face Shields

  
**350**  
Hazmat Suits

  
**9**  
Thermometers



BUILDING  
FOR THE  
FUTURE

# Campaign 100: LCIF Empowering Service

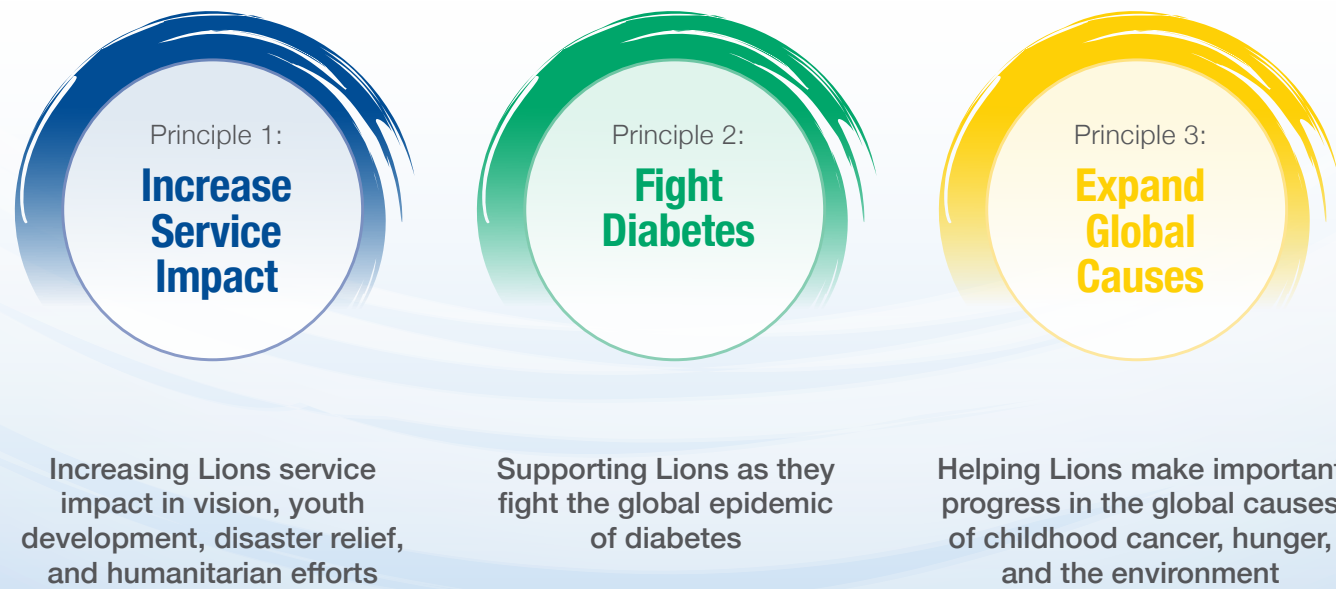


***Campaign 100: LCIF Empowering Service, the most ambitious capital fundraising campaign in the Foundation's history, launched in July 2017 with a goal to raise US\$300 million.***

Leading efforts at the international level are Campaign Chairperson Dr. Jitsuhiro Yamada and Campaign Vice Chairperson J. Frank Moore III. As past international presidents of Lions Clubs International and former chairpersons of LCIF, Dr. Yamada and Mr. Moore bring rich global perspective and vast institutional knowledge to Campaign 100.

## Campaigning for the Future

Supporting the chairperson and vice chairperson are Campaign 100 International Committee members, leaders from Lions' eight constitutional areas strategically leveraging Lions' volunteer structure to raise funds by building awareness of LCIF and Campaign 100, which centers on three principles:



## Campaign 100 Needed More than Ever

Fiscal year 2019-2020 was like no other. COVID-19 began its circling of the globe, disrupting lives, while stressing healthcare systems, economies, and everyday norms. Ushered in with the pandemic were unprecedented challenges for Campaign 100.

With more than a billion globally remaining at home to stay healthy, in May 2020, LCIF's Board of Trustees approved a one-year extension of Campaign 100, now slated to conclude June 30, 2022. The extension facilitates progressing toward our US\$300 million financial goal in new, innovative ways while continuing our ultimate goal... ensuring Lions' ability to serve for generations to come.

Much remains unclear in this unprecedented time. However, the global pandemic did not erase the need to feed the hungry, develop our youth, help the sick, and rebuild communities. It merely overshadowed it while complicating our ability to raise funds.

## The Year in Fundraising

Between Campaign 100's July 2017 launch and June 30, 2019, fundraising had reached nearly US\$111 million. Fiscal year 2019-2020 added US\$47,004,138, taking fundraising to a total of US\$157,907,876 at June 30, 2020. The goal had been to achieve US\$193 million.



## Campaign 100 Model Clubs

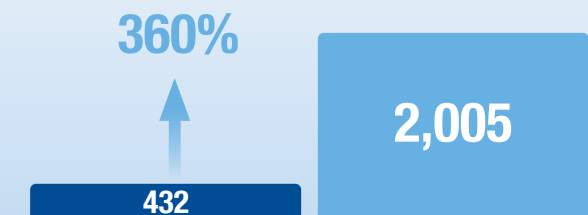
Model Clubs build financial support for Campaign 100 by broadly promoting Lions, LCIF, and the campaign. Strategies include seeking donations from club and community members, dedicating fundraising events to Campaign 100, making club treasury donations, and inspiring other clubs to become fundraising champions.

Eight progressive levels of Model Club and associated recognition provide incentive for clubs to continue fundraising beyond their initial goal. Donations credited to a club between July 1, 2017 and June 30, 2023, count toward Model Club goals.

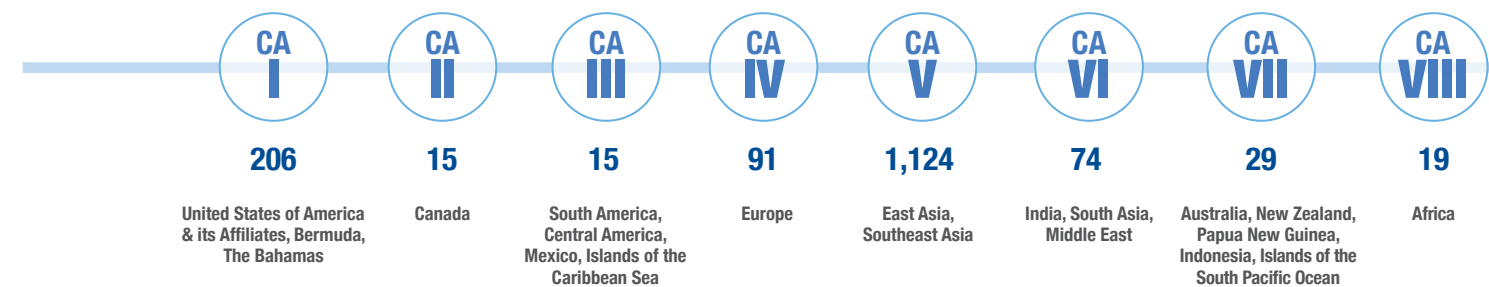
Fiscal year 2019-2020 began with 432 Model Clubs. By year's end, Model Clubs numbered 2,005 – an increase of more than 360 percent.

$$500 \times \text{Number of Club Members} = \text{US\$ Financial Contribution}$$

The formula above is used to calculate a club's minimum financial contribution to achieve base-level Model Club status.



## FY2019-2020 New Model Clubs, by Constitutional Area (CA): 1,573



## Lions help students plant trees at their newly renovated school.

With support from LCIF, Lions of Japan, and Nairobi Greater Lions Club, the school was renovated and expanded to include new buildings with running water, a boarding facility, and a backpack for every child.



BUILDING  
FOR THE  
FUTURE

## Our Supporters

### Serving through Generous Giving

Lions Clubs International Foundation is grateful to donors supporting LCIF so generously in fiscal year 2019-2020. Their kindness and giving spirit help LCIF empower Lions service worldwide to improve health and well-being, strengthen communities, and protect the vulnerable.



## 2019-2020 Top 10s

### Top Contributing Lions Districts

DISTRICT	DONATIONS (US\$)
354-D	\$1,402,488
334-A	\$1,102,533
300-E1	\$1,036,343
335-B	\$1,032,362
335-A	\$850,376
300-C2	\$783,696
300-A2	\$739,427
330-A	\$678,310
330-B	\$664,825
354-B	\$638,512

### Top Contributing Lions Districts

by Per-Member Average

DISTRICT	DONATIONS (US\$)
300-E1	\$524
300-D2	\$307
300-B2	\$242
354-D	\$229
300-A2	\$228
300-E2	\$205
334-A	\$196
331-A	\$195
300-D1	\$180
354-H	\$177

## 2019-2020 Top Contributors

### US\$200,000+

**Aruna Abhey Oswal**  
**Magnet Lin**

### US\$100,000-\$199,999

**Ta-Lung Chiang**  
**Hem Kanithi**  
**Liang-Chin Chiu**  
**Young-Ja Lee**  
**I-Lang Cho**  
**Noriyasu Ohtaka**  
**Je-Gil Goo**  
**Yi-Tu Cheng**  
**Shu-Chin Liao Huang**  
**Hsiu-Jung Huang**  
**Chen-Fen Feng**

### US\$25,000-\$99,999

Takahiro Sakurai  
Yasuo Iga  
Laitan Onolaja  
Akira Okamoto  
In-Kyo Oh  
Xing Ping Xiao  
Chizuko Yoshimura  
Masaaki Nakajima  
Hua Weng  
Chun-Huang Hsu  
Fumihiko Teshima  
Hee-Chae Park  
Mike First  
Sanjay Sahu  
Ea-Up Kim  
Bob Brown  
Sakiko Odaka  
Alice Chitning Lau  
Paulo Pennacchi  
Jung-Yul Choi  
Larry Johnson

Nam-Heoung Kim  
William Jordan  
Nam-Seung Kim  
Chin Hsiang Mao  
Lai-Hsin Fang  
Naresh Aggarwal  
Kentaro Kitano  
Gang-Su Ha  
Na-Yul Kang  
Ryozo Nishina  
Liao-Chuan Huang  
Hung Ju Chang  
Jong-Seok Kim  
Myung-Yun Huh  
Paul Settelmeyer  
Charlie Chan  
Hong-Soon Jun  
Hsiu-Fong Chou  
Toshio Takai  
Shingo Onodera  
Edward Lim Lin  
Norikata Mita  
J. Frank Moore III  
Shinji Kayamori  
Shunichi Hayashida  
Yukio Kambe  
John Knepper  
Naomasa Yamamoto  
Susumu Yano  
Joo-Hwan Yang  
Motoo Endo  
Yoshio Mizobuchi  
Xiaobo Li  
Wen Hua Jian  
Junnian Xiong  
Mei-Yu Chen

### US\$10,000-\$24,999

Anonymous  
Jayantilal Halai  
George Ibrahim

Kunihiro Kato  
Eiji Takaoka  
Guo-Jun Zhang  
Gil-Haeng Lee  
A P Singh  
Chikao Suzuki  
Kyu Sang Yoo  
Kwang-Jin Son  
Ichihiro Harita  
Shiro Morii  
Yasuyuki Akiyama  
Isao Matsuoka  
Larry Stewart  
Yoichiro Tsumura  
G Ramaswamy  
Kwang Man Choo  
Marie Cunning  
Gudrun Yngvadottir  
Hsiu-Yun Tsai  
Douglas Chan  
Tzu-Ting Chou  
Kristinn Hannesson  
Shunji Enomoto  
Yoshikazu Suzuki  
Kwang-Ho Kim  
Isamu Arino  
Heidi-Anne Nathan  
Takao Kitajima  
Jean-Pierre Penalba  
Hamed O B Lawal  
Junichi Takamatsu  
Michael Banks  
Young Bae Mo  
In-Chil Park  
Calvin Smith  
Jitsuhiro Yamada  
Fu-Lai Tsai  
Wen-Sheng Chang  
Fang-Ching Liao  
Fang-Lin Wang  
Wen-Hau Cheng  
Rebecca Daou

Sang-Beom Kang  
Kajit Habanananda  
Dong-Heui Kim  
Jung-Ki Kim  
Shu Ping Sun  
Somsakdi Lovisuth  
Joong-Hyo Bae  
Prithvi Jairath  
Peerawat Thum-Utaiporn  
Koji Tsurushima  
Wen Tsung Liang  
Chun-Sheng Yeh  
Hsiu-Hua Chang  
Yoshiko Ota  
Hideki Kitahata  
Masashi Matsui  
Morimitsu Asano  
Osamu Watanabe  
Pai-Hsiang Fang  
Joo-Sub Lee  
Yen-Yoo Wu  
Yasunobu Shikina  
Shih I Yu  
Mei-Ling Lo  
Chi-Hung Li  
Min Chii Chang  
Chien-Chung Liao  
Pravin Chhajed  
Masahiro Nakamura  
Nobuo Nishiki  
Masanori Imai  
Yeon Lee  
Masafumi Watanabe  
Mei-Chiao Chiu  
Gi Seo Park  
Han-Pin Lien  
Jonathan P.S. Lum  
Jae-Kwan Lyu  
An-Yun Liu  
Chuan Kuei Hung  
Nien-Sheng Chien  
Maria Simamora

OUR SUPPORTERS

Dong-Hwan Kim  
 Al Brandel  
 Kiyomi Oishi  
 Norma Suárez Sosa  
 Jorge Humberto Santos Martinez  
 Tamao Nomura  
 Koo-Bong Sin  
 Chun Sik Tea  
 Yoshio Nakaya  
 Haruo Yamada  
 Hiroko Kawamura  
 Hideki Uda  
 Makoto Oishi  
 Toshiko Sabae  
 Yoshinori Nishikawa  
 Mitsuyoshi Hashimoto  
 Kenji Motokawa  
 Suketaro Kato  
 Brian Stevenson  
 Shosaku Hashimoto  
 Masayoshi Maruyama  
 Nobuo Yasaka  
 Yoshihiro Saito  
 Ming-Sheng Chuang  
 Masaaki Masuda  
 Guk-Jin Byun  
 Jeffrey Keckley  
 Katsuki Shirosaka  
 Kenji Nagata  
 Tsuguya Fujii  
 Doo-Hoon Ahn  
 Gye-Oh Lee  
 Jae-Hong Kim  
 Ja-Beom Koo  
 Jae-Kap Heo  
 Kazushige Abe  
 James Bixler  
 Chul Woo Yang  
 Kyu-Dong Choi  
 Gertrude Rudert  
 Hyun-Sook Yoo  
 Myung-Soo Ha  
 Wan-Soo Park  
 Yoon-Taek Song  
 Seung-Ro Baek  
 Jung-Hyun Bae  
 Yong-Sik Min  
 Masaaki Kokaji  
 Tzu-I Lin  
 Randall Ross  
 John Rudert  
 Qazi Akramuddin Ahmed  
 Han-Young Kim  
 Michio Tomiyama

Nojin Jung  
 Shang Wen Lai  
 Manoj Shah  
 S Sivakumar  
 Mei-Li Huang  
 Hisanobu Beppu  
 Atsunobu Tanaka  
 Yuzo Kanazawa  
 Yoon-Sang Lee  
 Fu-Ta Hsu  
 Mei-Chuan Yu  
 Po-Kuang Chang  
 G. M. Balaji Rathnam  
 Ramji Patel  
 Toshiro Tanaka  
 Wang Hsiu  
 Yin-Mei Su  
 Shu-Lan Lin  
 Hsin-Chih Lin  
 Rong-Wen Lay  
 Seiki Yamaura  
 Yueh-Ling Chang  
 Jack Walker  
 Yoshie Shibata  
 Ming Chen  
 Jeff Chang Wei Huang  
 Shinji Sato  
 Wen Chi Chang  
 Richard Davis  
 Huei Mine Yu  
 Yen-Chieh Lee  
 Hsiu Hui Lai  
 Tsan-Ying Chen  
 Chin Chuan Tang  
 Bae-Kyung Yoon  
 Jun-Ho Yoon  
 Chia-Shun Lee  
 Ming-Chien Chiu  
 Wen-Yu Su  
 Chun-Mo Kang  
 Shih-I Tsai  
 Yu-Ling Liu  
 So-Chen Lo  
 Meifang Shi  
 Bong-Eun Park  
 Jia-Jen Wu  
 Dave Floyd

**US\$5,000-\$9,999**

Hiroshi Otani  
 G.R. Surya Raj  
 Mukesh Shankerlal Chowdhary  
 Elien Van Dille

Koichi Kanazawa  
 Narimasa Yoshihara  
 Kenji Tominaga  
 Lorri Rieger  
 Alexis Gomès  
 Yoshitaka Uhara  
 Tolulope Senbanjo  
 Yu Chin Hung  
 Omprakash Arora  
 Sung-Han Kim  
 Patti Hill  
 Hastuti Kresna  
 Norio Iga  
 Akira Masaoka  
 Takahito Oikawa  
 Yoshinori Shimada  
 Hyeon-Yul Kim  
 Mark Mansell  
 Naoko Udagawa  
 Yong-Cheol Kim  
 Velora Crook  
 Marlene Sartor  
 Li-Hua Chou  
 Sharon Holthaus  
 Wei-Chieh Chen  
 Cheng Chiang Hsieh  
 Anil Agrawal  
 Ki-Do Jun  
 Claudia Balduzzi Mariani  
 Lewis Quinn  
 Catherine Sebat  
 Giampietro Dolce  
 Svein Berntsen  
 Randy Hudson  
 Kouichi Hanaue  
 Hae-Ok Kim  
 Hiroyuki Yamagishi  
 James Johnston  
 Noriyoshi Ishioka  
 Shoichi Anzawa  
 Seiju Tamaki  
 Kazuo Yamaguchi  
 Haruo Yoshimoto  
 Tetsuo Nakajima  
 Moriyoshi Masumoto  
 Keon-Woo Kim  
 Christiane Duncan Aka  
 Chizuko Nagasawa  
 Chuen Chi Lee  
 Dumitru Danut Sain  
 Shu-Hui Chou  
 Athanasios Maimaris  
 Litawaty Widjaya  
 Juswan Tjoe

Robert Littlefield  
 Kwang-Ju Choi  
 Sun-Hee Joo  
 Woo-Jung Kim  
 Ricky Dodson  
 Amnuay Horburapha  
 Jong-Yup Lee  
 Terence Treppa  
 Yumin Natsu  
 Duk-Bin Im  
 Mitsuo Honjo  
 Nobuo Takai  
 Myeong-Kook Lee  
 Amornrat Hanshin  
 Brian Sheehan  
 Tadtakonnon Mananthanthasee  
 Yoshitsugu Hirano  
 Hyun-Sup Sim  
 Pil-Soo Seol  
 Alan Reiver  
 Ming-Tsung Huang  
 Vijay Kumar Raju  
 Marie Petraitis  
 Su-Lien Wu Hsu  
 Ching-Li Lee  
 Arouna Nikiema  
 Daisuke Kura  
 Yi Lin Yang  
 Jea-Gun Jung  
 Yuan-Fu Lee  
 Wan-Ho Kim  
 Wangxing Tian  
 Shun-Fa Yeh  
 Chen-Hsiung Chang  
 Ping-Chuan Wang  
 Li-Hsueh Chou  
 Shigehito Hayashi  
 Anne Smarsh  
 Jagdishchandra Agrawal  
 V Venkata Krishna Reddy  
 Carmela Pucci  
 Indra Khatry  
 Wen Jung Chen  
 Haynes Townsend  
 Junichi Matsuura  
 Hirofumi Shimosoeda  
 Shozo Suwa  
 Kenichi Yamamoto  
 Tatsuya Miyo  
 Katsuyuki Takeda  
 Sanjay Agarwal  
 Takafumi Akutsu  
 Isao Tonosaki  
 Toyoshige Nakatani

Young Park  
 Sook-Hee Oh  
 Hiroji Okumura  
 Koji Tsuji  
 Katsumi Hoshino  
 Harendra Shukla  
 Akio Negishi  
 Kwan-Sik Yun  
 Minoru Honda  
 Masakatsu Takano  
 Masao Shinzato  
 Juan Martínez Alba  
 Ryukei Oishi  
 Setsuo Sugiyama  
 Katsuhiko Kakihara  
 Soji Ono  
 Hitoshi Fujiya  
 Yuji Ogawa  
 Chun Caiang Chen  
 Guen-Dong Kim  
 Hyun-Duk Jang  
 Rosemary A. Ferguson  
 Yasuko Kishimoto  
 Subbiah Shivasubramaniam  
 Jae-Oh Yang  
 Jun Takahashi  
 Myung-Kyu Choi  
 Jong-Woo Kim  
 Hyun-Jong Shin  
 Young-Sin Kim  
 Eiji Ishihara  
 Yasuhisa Nakamura  
 Takayuki Muranaka  
 Tomoaki Banno  
 Sa-Soon Hong  
 Chul-Kyoo Kim  
 Kang Hoon Rhee  
 Kyu-Bong Han  
 Young Chul Lee  
 Nam Cho  
 Moon Chan Na  
 Yung-Duk Kim  
 Kyung-Sook Lee  
 Chong-Jin Cho  
 Moon-Soo Han  
 Toshiaki Nishimura  
 Toshiaki Saito  
 Masahiro Yamada  
 Fred Rieger  
 K R Vara Prasadarao  
 Young-Chul Seo  
 Shan Chang  
 Frank Sampson  
 Ramachandran Swaminathan

Stanislaus Balaraj  
 Kuo-Jung Lin  
 Kyu-Nam Han  
 Chin-Sheng Liang  
 Yang-Ii Liu  
 Yoshitaka Izumi  
 Victor Quezon  
 Kazuo Hidawa  
 Pai Chin Wang Yang  
 A. Michael Slosberg  
 Sung Tsai  
 Kohei Sato  
 Kuei-Shya Chen  
 Yukiharu Sako  
 Yvonne Paris  
 Rajiva Chandra  
 Chii Chang  
 Chin-Lien Tsai  
 Ling-Chu Wu  
 Nobuya Watanabe  
 Lolita Corpuz  
 Shuang Liu  
 Hiromichi Shiki  
 Masahiro Yamamoto  
 James O'Rourke  
 Stefan Chorus  
 Hastings Eli Chiti  
 Jui-Yang Tung  
 Moon-Soo Jun  
 Kuen-Yi Wang  
 Carlos Riederer  
 Yu-Jen Cheng  
 Yu-Chuan Chang  
 Seiji Ishii  
 Louis Ng Cheong Tin  
 Tsai Hung  
 Ming-Yen Huang  
 Shigeharu Shibuta  
 Jae-Won Yang  
 Li-Yun Chen  
 Wen Shien Chiu  
 Ronald Espejo Hermoza  
 Hiroshi Norita  
 Hui Yang  
 Junko Harada  
 Samir Abou-Samra  
 Milan Dalal  
 Paul Petraitis  
 Larry Woodling  
 Teresa Mann  
 Nai-Cheng Chi  
 Yoshihito Uemura  
 Jae-Hwan Kim  
 Gun-Taek Jang

Denny Hsu  
 Makoto Yatsunami  
 Yasuko Takeda  
 J. Wayne Wrightstone  
 Jui-Tai Chang  
 Ming-Chou Su  
 Hsuan Hsueh  
 L K S Syed Ahamed  
 Chang Hong  
 Christian Colombo  
 Hsiao Yuan Huang  
 Oh-Hung Kwon  
 Michiaki Nozu  
 Laura Del R Lopez D Martinez  
 Johnny C C Chang  
 Ling-Hsun Chao  
 Shui-Yun Ou Mai  
 Tsai-Chiu Lee  
 Shu-Chuan Lin  
 Yo-Wan Kim  
 Mei Feng Shen  
 Ming-Chang Chen  
 Yen-Feng Ho  
 Ming Te Hu  
 Hui-Yi Wu  
 Sunao Kodama  
 Cheol-Jin Kim  
 Hsiu Lien Liao  
 Chun-Kan Lee  
 Hsen-De Len  
 Yung-Joo Cho  
 Kyung-Boon Park  
 Wennie Bico  
 Feng-Chi Chen  
 Jung-Eun Oh  
 Takayuki Moriguchi  
 Chen Chung Yuan  
 Mu-Cheng Chang  
 Yasutaka Noka  
 Yung Ho Wu  
 Suh-Mei Ko  
 Lynda Odu-Okpeseyi  
 Hsin-Fu Liao  
 Chyong-Shwu Yang  
 Kuang Yuan Tsai  
 Jung-Sub Lee  
 Min-Hsien Lee  
 Syafii Salim  
 Hyun Oh  
 Sung-Lan Kim  
 Jong-Gyu Hwang  
 Chiung-Wen Kuo  
 Annie Wong  
 Hsiu Wen Yang

Chuan-Wei Sung  
 Ming-Chao Tsai  
 Shu-Lien Wei  
 Tzer-Hua Li  
 Chao-Lei Lee  
 Hsien-Li Lo  
 Shui-Chuan Chao  
 Yi-Ju Tsai  
 Ming Szu Chang  
 Jui-Mei Chang  
 Chun-Liang Lin  
 Young-Soo Lee  
 Ming Chi Chang  
 Chiu Yi Wu  
 Tseng-Chun Hsu  
 Ming Hsien Lin  
 Chi-Ming Chen  
 Chao-Wen Chang  
 Heng-Tai Lin  
 Bayani Marabe  
 Chih-Yi Chiu  
 Jung-Hee Kim  
 Kwang-Seok Kang  
 Hung-Hua Kuo  
 Ming Fa Chen  
 Hua-Hsiang Chien  
 Su-Hsia Tung Tsai  
 Tai-Hua Shih  
 Tzu-Che Huang  
 Shi-Hui Yeh  
 Sanwill Srivastava  
 Bambang Mulyanto  
 Jeom-Su Kim  
 Thomas Caniano  
 Steven Field  
 Marie Vanerian

BUILDING  
FOR THE  
FUTURE

# Board of Trustees



**Gudrun Yngvadottir**  
Immediate Past International President,  
Lions Clubs International  
LCIF Chairperson



**Dr. Jung-Yul "Yul" Choi**  
International President,  
Lions Clubs International



**Douglas X. Alexander**  
International First Vice President,  
Lions Clubs International



**Brian E. Sheehan**  
International Second Vice President,  
Lions Clubs International



**Dr. Patti Hill**  
International Third Vice President,  
Lions Clubs International



**James E. "Jim" Ervin**  
Past International President,  
Lions Clubs International  
Constitutional Area I



**Garnet E. Davis**  
Past International Director  
Constitutional Area II



**Ramiro Vela Villarreal**  
Past International Director  
Constitutional Area III



**Sandro Castellana**  
Past International Director  
Constitutional Area IV



**Dr. Jitsuhiro Yamada**  
Past International President,  
Lions Clubs International  
Constitutional Area V



**Vijay Kumar Raju**  
Past International Director  
Constitutional Area VI



**Barry J. Palmer**  
Past International President,  
Lions Clubs International  
Constitutional Area VII



**Alexis Vincent Gomès**  
Past International Director  
Constitutional Area VIII



**Lewis Quinn**  
Past International Director  
Largest Membership Country



**Aruna Abhey Oswal**  
Past International Director  
Second Largest Membership Country



**Dr. Ta-Lung Chiang**  
Past International Director  
Largest Per-Member-Giving Country



**Chikao Suzuki**  
Past District Governor  
Second Largest Per-Member-Giving Country



**In-Kyo Oh**  
Past Council Chairperson  
Third Largest Per-Member-Giving Country



**Joe Preston\***  
Past International President,  
Lions Clubs International  
Most Recent Past LCIF Chairperson



**Chancellor Bob Corlew**  
Past International President,  
Lions Clubs International  
Second Most Recent Past LCIF Chairman



**Dr. Naresh Aggarwal**  
Past International President,  
Lions Clubs International  
Appointee of International President

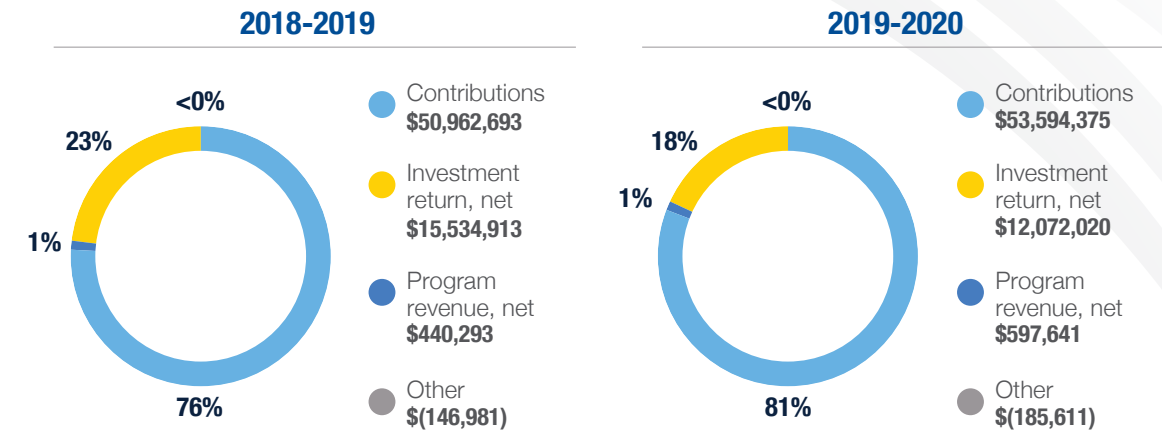


**Doo-Hoon Ahn**  
Past International Director  
Appointee of International President

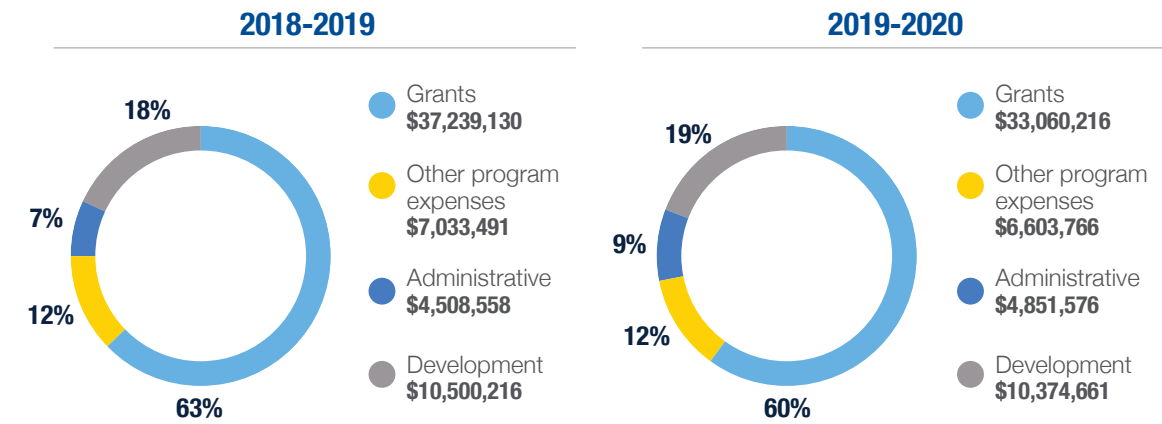
\* appointed due to vacancy

# Financial Information

## LCIF Revenue and Gains By Fiscal Year (US\$)

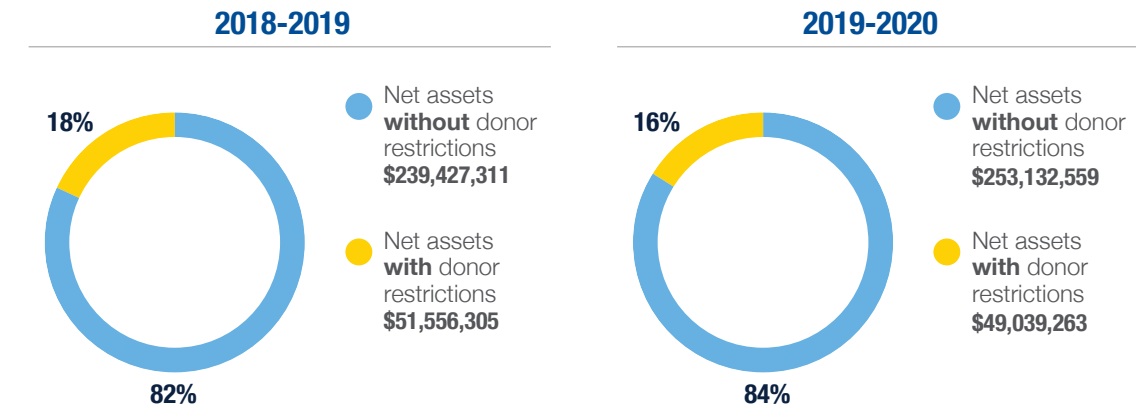


## LCIF Expenses By Fiscal Year (US\$)



Net Assets at End of Fiscal Year (US\$)	2018-2019	2019-2020
	\$290,983,616	\$302,171,822

## Total Net Assets By Fiscal Year (US\$)



**STATEMENTS OF FINANCIAL POSITION** | June 30

Assets	2020	2019	Liabilities and Net Assets	2020	2019
Cash and cash equivalents	\$ 6,956,746	\$ 5,098,637	Accounts payable	\$ 798,832	\$ 193,007
Accrued investment income receivable	320,691	427,828	Accrued expenses	483,536	367,948
Accounts receivable, net	51,057	67,609	Due to The International Association of Lions Clubs	-	1,484,154
Due from non-United States Lions Clubs districts	1,003,694	560,929	Grants payable	18,947,332	25,726,013
Due from the International Association of Lions Clubs	4,708,926	-	Charitable gift annuities	78,854	135,011
Prepaid expenses	1,141,147	1,110,058	<b>TOTAL LIABILITIES</b>	<b>20,308,554</b>	<b>27,906,133</b>
Promises to give, net	13,171,718	9,217,751	Net assets		
Investments	294,546,003	301,857,071	Without donor restrictions	253,132,559	239,427,311
Property and equipment, net	575,165	501,893	With donor restrictions	49,039,263	51,556,305
Other assets	5,229	47,973	Total net assets	302,171,822	290,983,616
<b>TOTAL ASSETS</b>	<b>\$322,480,376</b>	<b>\$318,889,749</b>	<b>TOTAL LIABILITIES AND NET ASSETS</b>	<b>\$322,480,376</b>	<b>\$318,889,749</b>

**STATEMENTS OF ACTIVITIES** | June 30, 2020

	Without Donor Restrictions	With Donor Restrictions	TOTAL
<b>Operating</b>			
Revenue and gains			
Contributions	\$ 35,347,124	\$ 18,247,251	\$ 53,594,375
Program revenue, net	597,641	-	597,641
Investment return, net	17,129,663	-	17,129,663
Net assets released from restrictions			
Satisfaction of purpose restrictions	20,786,141	(20,786,141)	-
<b>TOTAL OPERATING REVENUE AND GAINS</b>	<b>73,860,569</b>	<b>(2,538,890)</b>	<b>71,321,679</b>
Expenses and losses			
Program services			
Grants	33,060,216	-	33,060,216
SightFirst	1,950,238	-	1,950,238
Lions Quest	2,365,154	-	2,365,154
Other	2,288,374	-	2,288,374
<b>TOTAL PROGRAM SERVICES</b>	<b>39,663,982</b>	<b>-</b>	<b>39,663,982</b>
Administrative	4,851,576	-	4,851,576
Development	10,374,661	-	10,374,661
<b>TOTAL OPERATING EXPENSES</b>	<b>54,890,219</b>	<b>-</b>	<b>54,890,219</b>
Operating revenue and gains in excess of (less than) operating expenses	18,970,350	(2,538,890)	16,431,460
<b>Non-operating</b>			
Revenue and gains			
Investment return, net	(5,079,491)	21,848	5,057,643
Net loss on currency exchange	(299,923)	-	(299,923)
Change in value of charitable gift annuities	45,453	-	45,453
Other income	68,859	-	68,859
<b>TOTAL NON-OPERATING REVENUE AND GAINS</b>	<b>(5,265,102)</b>	<b>21,848</b>	<b>(5,243,254)</b>
Changes in net assets	13,705,248	(2,517,042)	11,188,206
Net assets, beginning of year	239,427,311	51,556,305	290,983,616
<b>NET ASSETS, END OF YEAR</b>	<b>\$ 253,132,559</b>	<b>\$ 49,039,263</b>	<b>\$ 302,171,822</b>

**STATEMENTS OF CASH FLOWS** | June 30

	2020	2019
<b>Cash flows from operating activities</b>		
Change in net assets	\$ 11,188,206	\$ 7,509,523
Adjustments to reconcile change in net assets to net cash used in operating activities		
Depreciation and amortization	187,516	143,542
Net realized and unrealized (gains) on investments	(6,317,147)	(12,161,472)
Changes in operating assets and liabilities		
Accrued investment income receivable	107,137	(108,875)
Accounts receivable	16,552	41,885
Due from non-United States Lions Clubs districts	(442,765)	(73,587)
Due from The International Association of Lions Clubs	(4,708,926)	-
Prepaid expense	(31,089)	94,910
Promises to give, net	(3,953,967)	(2,477,553)
Other assets	42,744	2,052
Accounts payable and accrued expenses	721,413	49,514
Due to The International Association of Lions Clubs	(1,484,154)	(74,648)
Grants payable	(6,778,681)	(1,715,091)
Charitable gift annuities	(56,157)	(22,900)
<b>NET CASH USED IN OPERATING ACTIVITIES</b>	<b>(11,509,318)</b>	<b>(8,792,700)</b>
<b>Cash flows from investing activities</b>		
Purchase of investments	(135,035,816)	(268,859,741)
Proceeds from sale of investments	148,664,031	267,777,809
Purchases of property and equipment	(260,788)	(185,445)
<b>NET CASH (USED IN) PROVIDED BY INVESTING ACTIVITIES</b>	<b>13,367,427</b>	<b>(1,267,377)</b>
<b>Change in cash and cash equivalents</b>	<b>1,858,109</b>	<b>(10,060,077)</b>
Cash and cash equivalents, beginning of year	5,098,637	15,158,714
<b>CASH AND CASH EQUIVALENTS, END OF YEAR</b>	<b>\$ 6,956,746</b>	<b>\$ 5,098,637</b>





**Lions Clubs International**  
**FOUNDATION**

**The Global Foundation**  
**Empowering Lions Service**

**International Headquarters**

Lions Clubs International Foundation  
300 West 22nd Street  
Oak Brook, IL 60523-8842 USA  
+1 630.571.5466  
[lcif@lionsclubs.org](mailto:lcif@lionsclubs.org)  
[lionsclubs.org/donate](https://lionsclubs.org/donate)